

suilvision

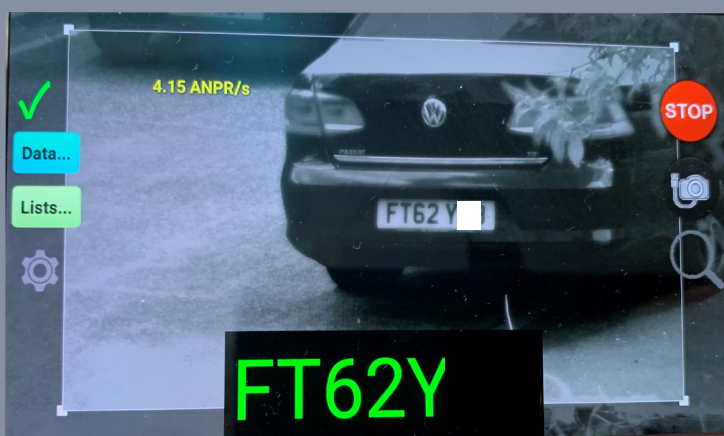
Puma Mobile

The Puma Mobile Camera from Suilvision utilises the latest in ground breaking software and hardware technology. From the all new camera housing to the brand new Android based software control the Puma Mobile delivers unrivalled performance. Utilising a modern Android Smart Phone to run the engine, all the important functions are automatically set leaving the user the simple task of aiming the camera to obtain the best view.

The camera is fitted with smart IR illumination to ensure capture of vehicles in all conditions 24/7.



No vehicle modifications needed - external magnetic or suction mount, connection cable provided. No need for complex calibration and setup - all automatic



Can be mounted and installed by user in less than 30 seconds. Can be moved from one vehicle to another in under a 1 minute



Puma Mobile

- Designed specifically for Mobile applications
- Uses Android Phone App
- Intelligent plate finding
- Automatic adjustment of IR Light, set Gain and Shutter speed
- Automatic setup
- Export data to remote management system
- Integration in 3rd party applications using API
- High accuracy plate read 24/7
- Adjustable sun shield keeps rain off the glass for clear images
- Regulated power supply allowing for input voltages of 6-34 VDC
- Simple install to vehicle, plug into USB power or Cigar lighter
- Connectivity to camera using innovative connection box
- Keeps camera alive when starting engine
- Secure extruded metal camera housing
- Cost effective solution

Please contact your distributor for more information